

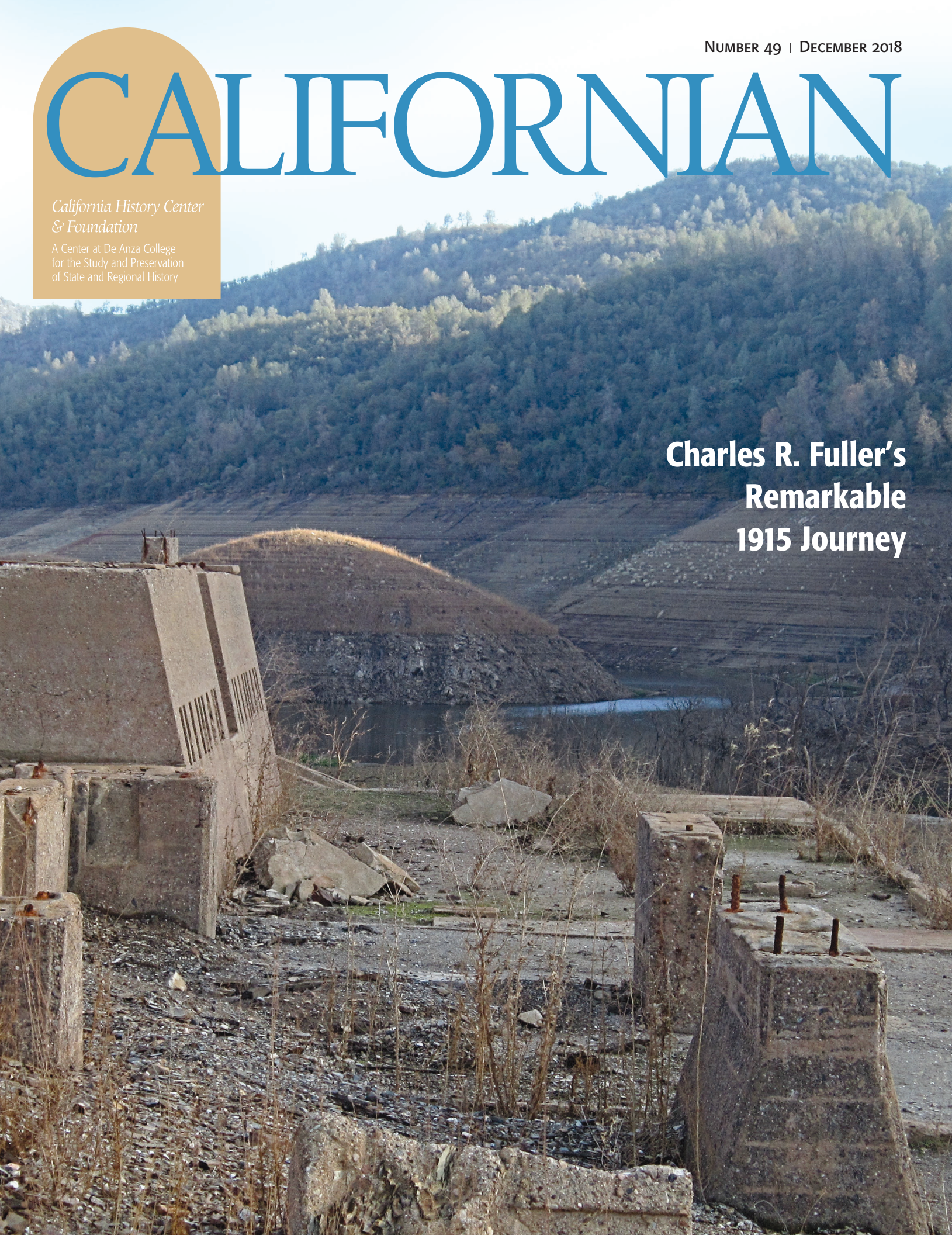
NUMBER 49 | DECEMBER 2018

CALIFORNIAN

*California History Center
& Foundation*

A Center at De Anza College
for the Study and Preservation
of State and Regional History

**Charles R. Fuller's
Remarkable
1915 Journey**



The 77th anniversary of Executive Order 9066 marks the beginnings of forced expulsion & mass incarceration of Japanese Americans in World War II. Learn about its history as we face an upsurge in racism, profiling, & attacks on immigrant communities.

DAY OF REMEMBRANCE

17TH ANNUAL CAMPUS COMMEMORATION

TUES FEB 19, 2019

1:30 - 3:00PM

De Anza College

Campus Center

Conference Rooms A & B

21250 Stevens Creek Blvd, Cupertino, CA 95014

FEATURING

NANCY UKAI

Project Director of "50 Objects" showcasing hidden, faded objects that are now unearthed to powerfully reveal individual, personal stories of Americans rounded up and imprisoned in concentration camps

AND A

PANEL DISCUSSION

on the Japanese American experience & its lessons to continue the fight today against attacks on Muslim Americans and immigrants.



Contact Tom Izu: (408) 864-8986 or izutom@fhda.edu

sponsored by California History Center's Audrey Edna Butcher Civil Liberties Education Initiative

Calendar

CHC Speakers' Series dates to be determined

DECEMBER

14 Last day of winter quarter

12/15/2018 – 1/6/2019 WINTER HOLIDAY

JANUARY

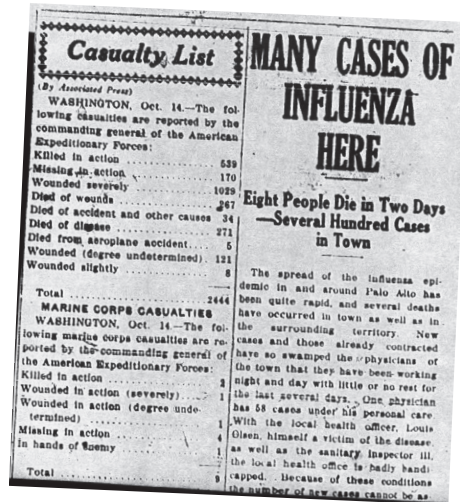
7 First day of winter quarter

21 Martin Luther King Jr. holiday

23 Flu: Our dreaded enemy, lecture, 6:30 – 10:20 pm, CHC

26 Flu: Our dreaded enemy, field study, 9:00 am – 5:30 pm

30 Flu: Our dreaded enemy, lecture, 6:30 – 10:20 pm, CHC



FEBRUARY

1 Flu: Our dreaded enemy, field study, 9:00 am – 5:30 pm

15 – 18 President's holiday

19 Day of Remembrance 1:30 – 3:00 pm, Campus Center, Conference Rooms A & B

MARCH

29 Last day of winter quarter

3/30 – 4/7 SPRING HOLIDAY

APRIL

8 First day of spring quarter



California History Center & Foundation
A Center for the Study of State and Regional History
De Anza College

21250 Stevens Creek Blvd., Cupertino, CA (408) 864-8712
Web: www.DeAnza.edu/CalifHistory

Trianon Building Hours:
Tuesday through Thursday 9:30am to noon and 1-4pm
or call for an appointment.

Foundation Board

President
Mark Healy

Founding President
Louis Stockmeir

Founding Executive Director
Walter Warren

Trustees
Alicia Cortez, Purba Fernandez, Cozetta Guinn, David Howard-Pitney, William Lester III, Ron Muriera, Ulysses Pichon, Cecilie Vaughters-Johnson, Noemi Teppang

Ex-officio
Carolyn Wilkins-Greene

CHC Staff

Director
Tom Izu

Staff Assistant
Blaine Agustin

Librarian
Lisa Christiansen

Californian

Editor
Lisa Christiansen

Contributors

In this Issue

Director's Report is on hiatus for this issue.

Civil Liberties 5

Charles R. Fuller's Remarkable 1915 Journey from CHC's Fuller Album 6

At the Center

At the Center Highlights 19

Winter Class 23

Californian is published by the California History Center & Foundation. The magazine is mailed to members as a benefit of annual membership in the CHC Foundation. Membership categories: \$50 Individual; \$40 Family; \$50 Supporter; \$100 Sponsor; \$500 Patron; \$1,000 Colleague.

Your contribution is tax-deductible to the extent allowed by law. The value of goods received as a benefit of membership must be deducted from the amount of all contributions claimed as a deduction. CHCF members receive issues of *Californian* magazine and members who contribute at the \$50 level and above also receive a yearly Local History Studies publication, when available.

© 2018, California History Center Foundation ISSN: 0742-5465

Audrey Edna Butcher Civil Liberties Education Initiative

2018 De Anza College Academy: Summer Youth Enrichment Program

“Because equal rights, fair play, justice, are all like the air: we all have it, or none of us has it. That is the truth of it.”

—Maya Angelou

Venturing into new territory, CHC sponsored a three-week summer class on civil liberties for 15 high school students through the De Anza College Academy from July 16 through August 3, 2018. The class addressed pertinent questions each day and engaged students in thoughtful discussion of key issues challenging our society guided by a civil liberties conceptual framework. We used provocative questions and quotes to elucidate fundamental principles of the Bill of Rights and connected them to current related topics including: “the Muslim Ban,” “Black Lives Matter,” and “Gun Violence.” Students were introduced to local history research resources and methods to find stories and incidents that best illustrated the lessons we discussed.

Students worked in teams to produce a poster and brief essay on a topic they were most concerned with. Their work was incorporated in the CHC’s fall exhibit, “Wherever There’s a Fight: A History of Civil Liberties in California.”

“The students were very attentive and got into the issues immediately,” stated CHC Director Tom Izu, one of the instructors of the class along with De Anza College faculty member Christine Chai.

“The class was a real challenge for us since we have never offered one like this before. We learned a lot about how to use civil liberties as a way to approach relevant and controversial topics and look forward to offering this next summer,” Izu added.

Humanities Mellon Scholar intern, Trisha Aquino helped plan the course and CHC Librarian/archivist provided direct support services for the students throughout the course.

Right: Instructors for the extended-year civil liberties course for high schoolers, Tom Izu and Christine Chai. The extended-year course was a first for CHC.



Far right: Student presenters discuss topics and describe posters they created addressing contemporary civil liberties issues.



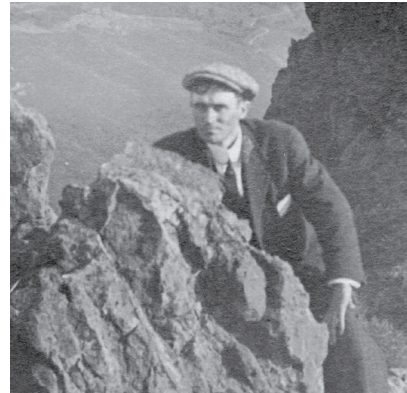
Below: Posters created during the summer program enhance and personalize the exhibit, “Wherever There’s a Fight.”



Charles Fuller's scrapbook journey to Yosemite

In past issues of *Californian* we have accompanied Charles R. Fuller of Sunnyvale on adventures to Mt. Hamilton, Big Basin, and Twin Lakes at Santa Cruz. Here, the intrepid traveler undertakes a trip, on horseback (Bonnie is the horse), accompanied by two friends and starting out from his home in Sunnyvale headed to Yosemite. The timing is mid-winter, 1915. John Muir had died December 24, 1914. Fuller's goal at age 31 was to see snow. We present here excerpts from the journal he kept with selected photographs taken on the trip.

We will continue the journey with Charles in future issues of *Californian*.



Self portrait of Charles Fuller taken on a previous trip to the summit of Mt. Tamalpais.



Sunday Feb 21 - 1915 1
Sunnyvale, California.
Allen Curtner and myself
decided that it would be
a good experience to take a
little horseback trip through the
mountains and see some California
snow. Accordingly we got per-
mission of our parents and also
saw Leon Austin who decided
to accompany us. We each have
riding horses and planned to spend
about ten days or a couple of
weeks on the road with Yosemite
Valley as our destination. We only
took about \$10² apiece for our expenses.

Sunday Feb 21 - 1915 1
Sunnyvale, California

Allen Curtner and myself
decided that it would be
a good experience to take a
little horseback trip through the
mountains and see some California
snow. Accordingly we got per-
mission of our parents and also
saw Leon Austin who decided
to accompany us. We each have
a riding horse and planned to spend
about ten days or a couple of
weeks on the road with Yosemite
Valley as our destination. We only
took about \$10.00 apiece for our expenses.

Vallecitos school
Monday Feb 22 1915 2

We got our things packed onto
our saddles and left Sunnyvale
at 11:00 o'clock A.M. in a rain
storm. After we got to Alviso the
weather cleared and we had good
weather the rest of the day. We
arrived at - passed through
Alviso, Milpitas, Warm Springs,
Mission San Jose and finally
camped for night at Vallecitos
school house where the teacher
was kind enough to leave back
door open. We did not get to sleep
till about midnight as we spent
time talking etc. around fire.

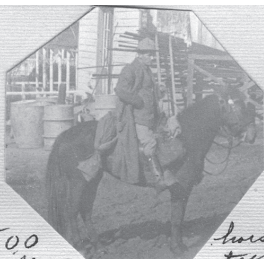
Tracey 3

San Joaquin County

We left the school house at
7:00 o'clock in the morning and
arrived at Livermore about 9:00
o'clock where we got breakfast at
a restaurant and started for Tracey
about 11:00 o'clock. We had good
roads for a time but for about
five miles the state highway is plowed
up from fence to fence and horses
plowed through sticky mud with
result that my horse lost two
shoes and Allen Curtner's horse lost
one shoe. We arrived at Tracey
about dark and spent some time
in trying to find place to stop
for night and put horses in shelter.
Finally a livery stable owner named
Frank Brusco said we could put our
horses in a shed near his stable and sleep there all
night. We appreciated his hospitality and took
advantage of it. Got supper at a grill and
after going to a picture show went to bed.



View from home showing snow on (500 mile trip)
Mt. Hamilton - Creating desire to see mine owner. (The mode of travel)
Sat. July 20 - '15



horseback trip



Mission San Jose in Alameda County
Founded in 1797 -
Passed this about 6:00
o'clock - Monday July 21 - '15



Business street in Tracy - San Joaquin County - 2723-15 Spent our night here.



S. P. DePue here at Tracy - Put horses in stable near here. Rained in morning.



274A-B

Two miles of San Joaquin River between Tracy & Lathrop - Noon Feb. 24 - '15 Our horses are on bridge -



Two views of Escalante Hotel's home - see below. Called on mine subsec. for some and left for Berkeley, about 10:00 AM.



Trip to Yosemite.

Word has been received from Chas. R. Fuller telling of an enjoyable trip to the beautiful Yosemite. Some three weeks ago the party of three consisting of Leon Austin, Allen Curtner and Chas. R. Fuller started on horseback to visit the Yosemite valley and the snowcapped Sierra Nevada mountains. After a week's travel Messrs. Curtner and Austin were compelled to give up the trip owing to the sickness of one of the horses. They are expected home any day. Mr. Fuller is completing the trip alone enjoying the winter scenery, and experiencing all kinds of roads and mountain trails. The weather so far has been fair and warm although there is an abundance of snow. Visits are made through Alameda, San Joaquin, Stanislaus, Tuolumne, Merced and Mariposa counties. After a visit in the famous Yosemite valley, Mr. Fuller expects to return by way of the Calaveras Big Trees and Lake Tahoe.

San Joaquin Co.

We got our breakfast at grill, then started on our way – arrived at Banta about 10:00 o'clock where we stopped to get horses shod. We found that Leon lost his auto gloves and Allen also lost one of his gloves. As a large piece of bacon was missing it is probable that some poor fellow helped himself. Our blacksmith bill was only \$1.50 and we hope not to have more trouble in that line. Left shop 10:30. Crossed San Joaquin river about noon. Allen & Leon managed to stop a runaway horse & buggy. Leon fell off his horse, when sinch loosened while chasing a jack rabbit and broke his gun stock. The country around Escalon is sandy - requires irrigation but country is thickly settled. W.S. Zeller a capitalist, formerly of

Palo Alto lives within a mile of this place. Did not take time to call on him. Escalon has grown for the last four years so that in a couple of more years it will be a lively little town. No saloons here, as is also the case at Oakdale the next town which we will reach tomorrow. After spending evening visiting with some Escalon girls we started on our way to Oakdale. It rained at this time so after a couple of hours we stopped at an old barn in a field for the night. It was midnight when we got to bed. The other mishaps of the day were the loss of our gloves. Someone also stole our bacon and bread. As yet we have not had occasion to cook any meals as there have been plenty of restaurants on way.

Tuolumne County

We left the barn about seven o'clock and started for Chinese Camp. We traveled about six miles and crossed The Stanislaus river then reached Oakdale at about 8:45 o'clock where we got our breakfast. Oakdale is in Stanislaus County and is last large town before reaching Yosemite valley. It is quite a good sized place, about four times the size of Escalon. We soon reached foothills of the Sierra Nevada mountains and after shooting 200 rounds of amunition secured enough birds for lunch which we prepared about 2:00 o'clock. It was our first meal we had cooked. Some men along road say it will be impossible for us to reach the valley on account of deep snow but we will go ahead and see for ourselves. A man named John Caufman told us we could not get much nearer than Smith



Tuolumne River near Oakdale - Stanislaus County July 25-'15



On road to Yosemite - Chinese Camp,
Old mining town stand here now
7 July 25-'15



Fields on road between Oakdale + Chinese Camp.
July 25-'15 Len Austin + Chas Fuller



Chinese Camp - starting for
Pine Hill - July 26-'15
Chinese Camp is in Tuolumne County



Pony - + practically first view of
Sierra Nevada foot hills - 7/25-'15



Chinese Camp - is well named - Friendly Chinese posed for this photo 7/26-'15

275

21 63 54

DOLLARS DIMES CENTS

YOSEMITE VALLEY RAILROAD COMPANY.

Conductor's Cash Fare Slip.

Form C. F. 1 **PASSENGER'S RECEIPT.**

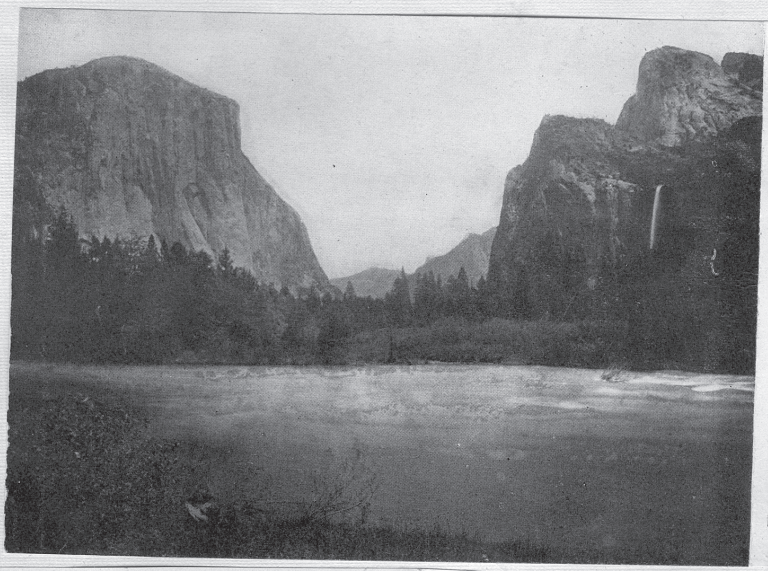
Amount of Fare Paid Indicated by Marginal Projections Above.

P. B. Monnett *W. Lehner*

Conductor Traffic Manager.

No. 16077

THREE PROJECTIONS ARE absolutely necessary on each Check.



Yosemite Valley
From Bridal Veil Meadows
Photo SUB-POST Card Co. L. A.
Trade Mark

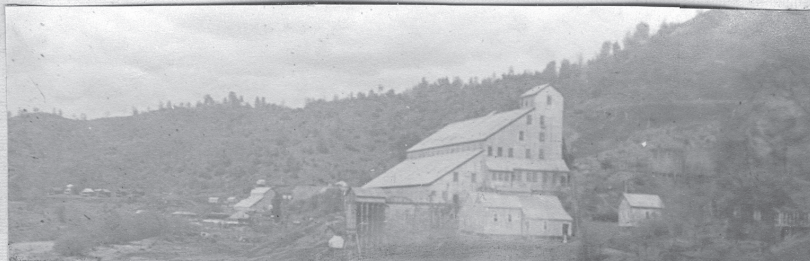
TABLE OF ALTITUDES IN THE YOSEMITE VALLEY. FROM U. S. GEOLOGICAL SURVEY.

Indian Name	Signification	MOUNTAINS	Above Sea	Above Pier
Tu-tock-a-nu-la	Great Chief of the Valley	El Capitan (Summit)	7564	3604
Pom-pom-pa-sus	Falling Rocks	Eagle Peak	7773	3513
To-coy-ae	Shade to Indian Baby Basket	Yosemite Point	6935	2975
Ti-sa-ack	Goddess of the Valley	North Dome	7531	3571
Mah-ta	Martyr Mountain	Half Dome	8852	4892
		Clouds Rest	9324	5364
		Cap of Liberty	7072	3112
		Mount Starr King	9081	5121
		Glacier Point	7214	3254
		Inspiration Point	5391	1431
		Sentinel Dome	8117	4157
Loya	The Sentinel	Sentinel Rock	7250	3290
Po-see-nah-Chuk-ka	Large Acorn Cache	Cathedral Spires	5903	1943
Hunto	The Watching Eye	Cathedral Rocks	6638	2673
		Leaning Tower	5863	1903

		WATERFALLS	Height of Fall	
Yosemite	Large Grizzly Bear	Upper Yosemite	1430	6525
		Lower Yosemite	320	420
Pi-wa-ack	Cataract of Diamonds	Nevada	217	5044
Yo-wi-ye	Meandering	Illilouette	594	5907
Illilouette	Rushing Water	Bridal Veil	370	5816
Po-ho-no	Spirit of the Evil Wind	Widow's Tear	620	4787
Lung-oo-too-koo-ya	Pigeon Fall	Virgin's Tear	1170	6466
			1612	7008

TABLE OF DISTANCES FROM THE "SENTINEL HOTEL."

ROADS		TRAILS	
Mirror Lake	3 miles	Glacier Point—Short Trail	4½ miles
Mirror Lake—(Round Trip), via Happy Isles	7 miles	Sentinel Dome	5½ miles
Foot of Lower Yosemite Fall	½ mile	Round Trip (Vernal and Nevada Falls, Glacier Point)	16½ miles
El Capitan Bridge	3 miles	Glacier Point via Vernal and Nevada Falls	11 miles
Bridal Veil Fall	4 miles	Glacier Point via Inspiration Point via the Dewey Trail	11 miles
		Hotel to the foot of the Vernal and Nevada Fall Trail	2½ miles
		Hotel to the foot of the Glacier Point Trail	1 mile
		Hotel to the foot of the Eagle Peak Trail	1 mile

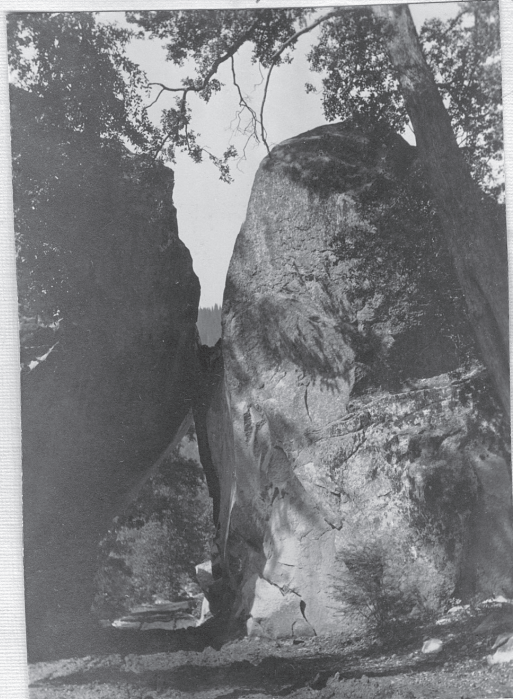


.. PRIEST HOTEL ..
 DAN CORCORAN, PROP.
 TABLE UNEXCELLED NEAT, AIRY LODGINGS
 SITUATED AT THE TOP OF THE
 FAMOUS PRIEST'S HILL : : :
 GATEWAY TO YOSEMITE AND NETCH HETCHY
 VALLEYS AND LOVELY LAKE REGION
 OF THE SIERRAS
 ♥♥
 LIVERY STABLE

Eagle Shawmut Mining Co. Two miles from Linnar ... forenoon bus 929-15

*Stopped at Priest's
 Hotel on summit
 of 2485 ft hill. 2/27-15*

*Made climb in 2 miles
 Sold here: "Too much snow to ride
 horse in on "Big Bear Road" So
 went to Coulterville on way to Merced River
 at Bagby - Lost Lewis & Allen here then returned
 home."*



*On 18 1/2 mile road between El Portal
 and Yosemite Valley - March 3-1915*

*Rided about 30 miles along the Merced River
 on railroad track from Bagby to El Portal
 March 1-2 - 1915
 This is in Mariposa County.*

*It rained three
 days - so had to
 stay on Shelling ranch
 Snowed one morning*



*Left my horse at stable
 on Shelling ranch - and
 walked in to Valley - 4 1/2 miles.*

HOTEL DEL PORTAL
 EL PORTAL
 CALIFORNIA

SENTINEL HOTEL
 YOSEMITE VALLEY
 CALIFORNIA

278A-B

*View of Sierra Nevada Mountains from foothills west of Shelling ranch - Yosemite Valley
 2030 ft from ...*

Ranch which is 15 miles this side of Crocker. He reminded us to visit his home at Knights Ferry on our return trip. We pass through lots of small villages but do not stop to make note of some. We rode until 11:00 o'clock at night then after passing through Keystone, where we got some refreshments we pushed on to Chinese Camp, ten miles ahead. Leon and Allen slept in the open but I pitched my tent and was very comfortable rest of night. Chinese Camp is a town of fair size. It was once a mining region. There is still a large mine within two miles of here. We may take a run out there in the morning. The weather thus far has been most favorable. Fair and warm. Can scarcely believe it is winter. The roads are fierce. No auto could make the trip just now on account of rocks, chuck holes, mud in places, also many fords. The construction gang are working on the highway now and may have it in fair condition by next summer.

Waterford is but a short distance from Oakdale – and that reminded me of Mr. W. R. Appling – who attended B.Y.P.U. assembly at Twin Lakes. Had I been alone I would have called on him. We also passed near Ripon but did not go to the town as we took a short cut to Oakdale. Ripon reminded me of what Miss Stone used to say about the place.

It is now Friday morning. While there was a big ring around moon last night yet it is fair weather. Was aroused by the singing of the birds.

I might have made note of the fact that Mr. Cauffman of whom I made note of yesterday said that

we could save 50 miles on our return trip if we would go by way of Modesto, Crows Landing, Adobe Flat San Antone Valley over top of Mt. Hamilton to San Jose. We may do this.

*Thus far we seem to cover
from 35 to 45 miles a day.*

The boys only took \$25.00 between them and despite all that I can do are spending their money too freely. I may have to lend them some of mine. I only brought \$16.00 myself. — They have bought a new rifle \$3.00 two pair of spurs \$2.00 and wasted about \$5.00 trying to be sporty – They would not have any money now if it were not for my conservativeness. We will get along all right.

My predictions of yesterday morning are quite correct. The boys have practically spent all their money and decided to return home. They will probably retrace the route to Tracy then save 50 miles by going over Mt. Hamilton. They have not seen the Conservatory – and they might as well take it in.

We left Chinese Camp about ten o'clock then in a couple of hours miles we reached the "Eagle Shawmut Mining Co's" 100 stamp mill. It is a large mine – but poor grade of ore – only \$5.00 per ton. Two hundred men are all that they use just now. We waited a couple of hours to get a chance to go through it but Supt. did not show up so had to abandon the idea. There are numerous smaller mines around here. About one o'clock we started for Priest Hill.— The boys



El Capitan on way to Sentinel Hotel.



Fresh View of the Yosemite Valley - Cascade Creek



Bridal Veil Falls



Yosemite Falls

279A-B



Near View of Bridal Veil Falls 620 ft. high
Hairs in breeze like a long white veil.



Sentinel Rock 7250 ft
above sea & 3290 ft. from Veil

passed me and were down to the river to wash up, but I kept on going – and as they have not shown up since, it is likely that they have decided to return home. This is due to the fact that their money is about gone.

Priest Hotel is on summit of a 2485 ft. elevation. This climb is made in a distance of two miles so the grade is very steep. Arrived here six o'clock last night and had horse put in stable and I had a chicken dinner in the hotel. Did not sleep as warm as I did last night in my tent.

A Yosemite Valley Guide told me not to try to go into valley by any wagon road - They are blocaded with snow and will be so until April or May. It will be necessary for me to go to Bagby in Merced Co. then have my horse in a stable and go by rail – or bike on track to El Portal, then ten miles over road to Yosemite Valley – There are some forest ranger trails that I could use from here but I would rather travel where there are some signs of civilization.

*It is now nine o'clock and I
must be on my way.*

The weather is fair and warm. Just like summer in middle of day, despite that snow is but 30 miles distant on Valley road.

I left Priest Hotel about ten o'clock and arrived at Coulterville three hours later. Good weather but threatening

rain. The distance was eleven miles. At Coulterville I inquired the way to Bagby on the Yosemite Valley RR line on the Merced river. They informed me of a short cut which I decided to take. After traveling ten miles I finally landed at a farm house. It was nearly dark and sprinkling. They told me that I had missed the Bagby road some four miles back, and that I could proceed by a trail. I therefore started out on the four mile trail but in a few minutes in got so dark that I could not see the trail. I returned to the farm house and asked a little girl if her father was home. She said yes and that she would go to the barn and help me find him. I asked if she thought I could buy some milk – She said that I could all right. We soon found the father & mother. Their names are Homer I. Shilling and the little seven year old daughter is named Edith May Shilling. They gave me permission to put my horse in their barn and allowed me to pitch my tent in the hay barn. They invited me to supper. We spent the evening playing phonograph - He played the violin – I spoke several pieces – And an old mining prospector named Mr. Logan - told stories, so it was nearly midnight when we went to bed. The little girl has not gone to school yet, but can read and write, can add, subtract, multiply and divide, knows all the countries of Europe as well as the states of the U.S. and their capitals. In other words she is the smartest little girl that I have ever known. Friendly and can converse as well as any girl three times her age. I must get her picture if possible. The mother is only twenty-seven years of age and does all the milking and barn chores as well as housework. She is a handsome woman – a native of



England. They own a ranch of 320 acres, and his father has 960 acres where they are living at present time. Their nearest neighbor is three miles. Mr. Shilling spends much time on the range – looking after the livestock. For over fifty years this country has been dug over and searched for gold. Remains of old camps and mines can be seen in every direction. Prospectors are still searching for gold, as of old.

Mariposa

When I got up this morning it was snowing. The snow flakes were as big as hens' feathers. The prospector, Mr. Logan said they were the largest he had ever seen. The snow turned to rain, and it has been raining practically all day. I bought a couple of quarts of milk and a package of corn-flakes for breakfast. I ate lunch with the family – and staid here all night. The elevation here is 2700 feet. There are numerous coyotes, also some mountain lions, deer and an occasional bear can be found. As yet I have not seen any such game, but will keep on lookout for same. The girl Edith is a prize if there ever was one. I wish I could kidnap her and bring her home. Her parents are going to send her to some town next year to attend school. Wish she could board with us – Would never get tired of her.

Am still at the Shilling ranch – of course I expect to pay them something. It is raining so hard I cannot travel. Hope to be on my way by tomorrow. It is going to be strenuous getting into the Valley, but I have not given it up- Could get along much better without the trouble and expense of a horse.

I get quite good meals here with lots of milk – Weather has cleared so I will leave tomorrow. Have arranged to board horse here for 25¢ per day. It is four miles from here by trail to Bagby. Bagby is on the Merced river about 30 miles by rail to El Portel! The railroad follows the left bank of river all the way. They charge about 12¢ per mile.

Arrived at Bagby 1:30 P.M. as train did not leave until 4:40. I thought I would walk part way and take train at Mt. King 7.8 miles ahead. I missed the train by about three minutes – so I got supper here. It is a large mining camp. After supper I decided inasmuch as there would be no other train until the same time tomorrow to proceed on foot as far as I could. I walked to Briceburg, arriving there some time after midnight. Briceburg is 17 miles from El 'Portel' I rested here until daylight – I am carrying 25 or 30 lbs of baggage – which ¢ is too heavy for easy walking. I notice that on opposite side of river there is a horse trail. I can see now that I ought to have brought the horse. I also could have ridden up the RR. right-of-way.

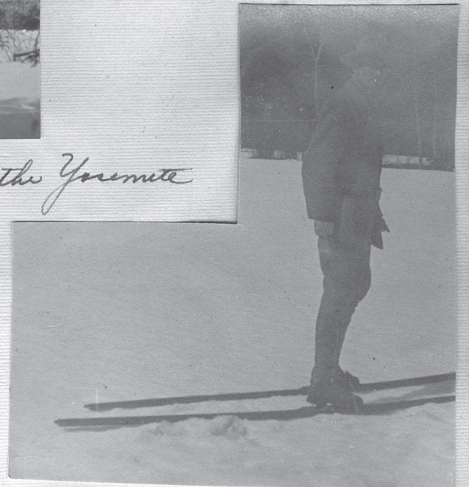
The weather was nice and warm. I am so lame and sore that I can scarcely walk. If I did not have so much baggage it would be easier. I walked to a mining camp called "Clearing House" which is 6.1 miles from El Portel then took train the fare was 75¢. I arrived at hotel about dark. Quite a number of tourists are here. I got supper here at hotel – and am writing this on the veranda.



Snow scenes in the Yosemite Valley - March 4-5-6 & 7-1915-



Snow 3 ft. on level.



*Snow Sports - First snow seen in 12 years. (CRS.)
Skiing - in Yosemite National Park -*



Chas P. Kuller on skis. in Yosemite Valley



North Dome

280A-B



Sentinel Rock.



Bridal Veil Falls.



*Arrived at this hotel in heart of Yosemite Valley - March 4-1915
Stayed at hotel until Sunday afternoon March 7-1915 then walked
to El Portal and eight miles beyond - Rode on train 15 miles then walked 19 miles to Shilby ranch*

It is twelve miles from here to valley by stage, fare \$2.50 so I guess I will walk the distance. The scenery is grand here Tops of mountains are covered with snow. The hotel and grounds are much finer than I had anticipated. The Yosemite Valley RR Co manages it as also does it the Sentinel hotel in the valley. It is a \$4.00 a day house.

Left El Portel about 8 o'clock and walked leisurely until I arrived at Sentinel Hotel which is in the heart of Yosemite Valley. I arrived here just at dark and in time for supper. I have paid for six meals in advance so it looks as if I will stay a couple of days, at least. The first part of the twelve mile hike was very similar to the last 30 miles of the Merced river – Road following the bank of river between huge canyons, uphill all the time until the floor of the valley at an elevation of ~~300~~ 4000 feet is reached. After about five miles I came to snow. I saw a nice warm place by some rocks – and took a bath. It was not any where near as cold as ocean water and it made me feel good – lameness disappeared. I will now throw in a few statistics from time to time for future reference – Yosemite Valley was discovered by a mining prospector in winter of 1849 & 50. His name – Dr. Bunnell. Mariposa battalion of soldiers sent to subdue the Indians in March 1851 – just 63 years ago. I have been listening to roar of Merced river for four days. In many places the cascades are noted. I entered valley from its lower or western side – I passed Cascade falls, then came beautiful Bridal Veil fall, 600 ft. It waives in the breeze just like a long veil. Sometimes the effect is more like shooting stars or sky rockets. In looking

at these falls, El Capitan may be seen close at hand on the left. The summit of El Capitan is 3,300 ft (3/4 of a mile) from valley floor. Only rock of kind in world having such a broad expanse of perpendicular wall. The facial area is 500 acres on two exposed sides. Bridal Veil creek falls over one of three massive rocks known as Cathedral Rocks. – I took photo showing everything I have described thus far in one view. Just back of these rocks is Cathedral Spires – resembling what they are named after their height is 2700 ft. – 700 ft of which are distinctly columnar in form. Just back of El Capitan “The Three Brothers” and “Eagle Peak are seen, the tallest being 3830. Named three brothers by Dr. Bunnell because three Indians were captured here. The Indians called the three peaks a name meaning three frog’s heads.

The next peak I noticed was “The Sentinel” – It is on opposite side of valley From “Three Brothers”. After passing many other points of interest on my way to heart of valley I at last arrived at Yosemite Village about six o'clock and immediately went to dining room of Sentinel Hotel and had supper. I will get all my meals here – also my room. – They gave me a down-stairs room with window and french-door leading to veranda. Things are quiet here on account of war in Europe – so I get good value for money. Wish I had not lugged my blankets now. I asked postmaster what it would cost to ship my 30 lbs baggage by parcel post to Bagby, and he said only 30 cts. I may do so. A professional globe trotter is here with his wife and he says he is more favorably impressed with this valley than anything he has ever seen. He has seen about all there is to see.

EDITOR'S NOTE: The people who were original Valley dwellers of thousands of years, Ahwahneechee, had been violently driven out by a state-sanctioned militia, the Mariposa Battalion including Dr. Lafayette Bunnell, in 1851, and forced onto reservations. Bunnell and the Mariposa Battalion were the first non-indigenous people to see the Valley.

Eighteen months after Fuller's excursion, August 25, 1916, President Woodrow Wilson signed into law the act creating the National Park Service.

In the summer of 1915, six months after Fuller's trip, Stephen Mather visited the Eastern Sierra leading a 30-man company of prominent business, political and academic figures in anticipation of the park service initiation. Mather's excursion ended at Tioga Road.

Besides Charles Fuller, the second decade of the 20th century brought civilian rangers to replace military staff in Yosemite, along with surveys, automobiles and the laying of plans for Hetch Hetchy reservoir.

At the Center

Welcome Blaine Agustin as the California History Center's newest staff assistant!

Note from Blaine: I use they/them pronouns when talking about myself, not she/her.

Blaine was a De Anza College student from 2013-2015 and graduated with a B.A. in Community Studies at UC Santa Cruz. Before coming to work at the California History Center, they were civically involved in Asian Pacific American Leadership Institute, Anakbayan Silicon Valley, Filipino Community Center, Transition De Anza, and De Anza Students for Justice.

Here's what they have to say about their experiences thus far:

"I value a sense of community. I think the International Institute for Restorative Practices best defines community as:

... if we perceive a connection between each other and a common interest in the activities and well-being of the group... then we are, by definition, part of a community.

When we speak about the "sense of community" that is missing from modern society, we are speaking about the absence of meaningful interrelationships between human beings and the absence of a sense of belonging to and common interest in something greater than ourselves.

In having that common interest to achieve something greater, I'm more capable to build up a sense of camaraderie and investment to the work. Coming into college, I was desperate for a sense of belonging and co-creating something positive. I found that for the first time in a social justice club during my first year at De Anza College. As my need for community is fed, it influences how I can continue building a material reality that is sustainable for our environment and those inhabiting it. I hope to be able to bring this energy and commitment not only to the California History Center, but in day to day life."

After four very productive years as administrative assistant and exhibit curator with CHC, Azha Simmons has accepted the position of Development Associate and Stewardship Coordinator at Museum of the African Diaspora in San Francisco. We wish her all success!



Blaine Agustin

At the Center

In Memoriam: Cozetta Gray Guinn

Cozetta Gray Guinn, for 20 years California History Center board member, curator and author, instructor, docent, artist, and friend, passed on November 15, 2018.

Born and raised in rural Arkansas in a place called Toadsuck near Bigelow in Perry County, Cozetta Gray grew up in a multi-generational household with brothers and sisters, going to school and church, working on the family farm, caring for beloved family members, making pre-

sentations of poetry and literature, and observing and negotiating life in the American South of the 1930s and '40s.

The Bigelow Rosenwald School which Cozetta Gray attended as a child was a favorite topic of hers in later life. From 1917 to 1932, Sears Roebuck president Julius Rosenwald and Booker T. Washington of the Tuskegee Institute built over 5000 Rosenwald schools, well-equipped schools for African American children. Mrs. Guinn had noted recently with alarm that her Bigelow Rosenwald school house was on an endangered list for historic buildings.

Cozetta Gray's academically competitive spirit from childhood was part of her success, standing her in good stead as a student at Philander Smith College in Little Rock. Teaching would become her calling. She would also pursue her love of and talent for art.

After a courtship based on correspondence, Cozetta Gray married Isaac "Ike" Guinn, an engineer and Korean War veteran, also an Arkansan. When Ike Guinn started work at Edwards Air Force Base in California, Cozetta Guinn developed a love for the desert as a subject of her artwork — she painted "Robber's Roost" in the Mojave Desert at "every time of day." Eventually the Guinns moved to Los Altos.

Cozetta and Ike Guinn opened their home to family, friends, students, and strangers, building and broadening community through participation and leadership in church, philanthropic and educational institutions. As African and African American art collectors and gallery owners the Guinns established further connections in the South Bay art community. Mrs. Guinn continued

teaching and painting. Her commitment to the art spectrum extended to docent work at the Fine Arts Museums of San Francisco.

On the De Anza College campus, Mrs. Guinn was Intercultural Studies instructor, Euphrat Museum board member, conference organizer, and curator. In 1998, former CHC executive director Kathi Peregrin introduced Mrs. Guinn to CHC staff. Exhibits and publications followed — foremost among them a major exhibit (2002) and its catalog (2012) — Californians Keeping Culturally Connected.

This exhibit brought together beloved objects that carried memories from the lives of African Americans who came to California from other parts of the United States. For each object the meaning to the individual or family was told along with the story of how the object connected them to other places and times and to the bigger story. The catalog project evolved into a substantial monograph and took the better part of 10 years to complete. The long preparation time for the book was partly a result of Cozetta Guinn's very full life, as instructor, conference organizer, painter, historian, poet, community-builder, friend, family member and wife. The author's persistence and quest for perfection finally resulted in a finished project. Working with Executive Director Tom Izu and CHC staff, and with Isaac Guinn's constant help and support, the catalog was published in 2012.

Among other accomplishments, Mrs. Guinn contributed the article "Seeing History Through Art" to Californian in December, 1998. In January, 1999, Cozetta Guinn curated the exhibit



“In Celebration of African American Art in Northern California, 1858 – Present” and in 2007, curated the exhibit honoring Nettye George Goddard and Goddard’s African American Cultural Center and Botanical Garden in San José as part of a series of conferences commemorating Yaaba Soore: The Path of the Ancestors. Nettye Goddard was a pioneering Santa Clara Valley instructor.

In 2008, Guinn organized a reception for and reading by California’s Poet Laureate at the time, Al Young.

Professor Guinn was California History Center board member from September 1999 till her passing.

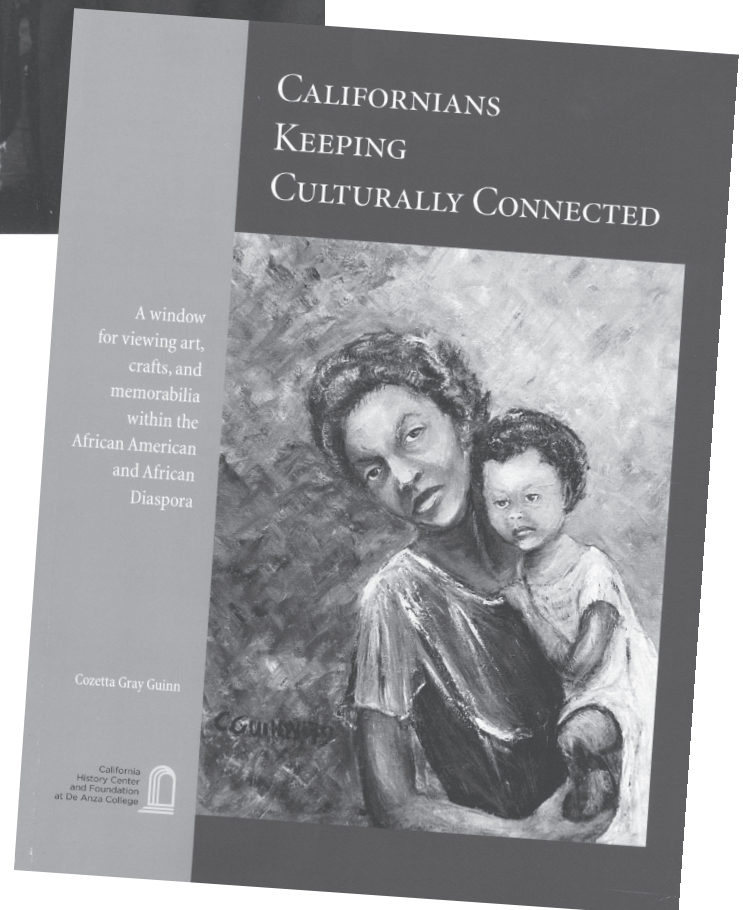
When Cozetta Guinn came to work at the California History Center she always brought stories, laughter, generosity, and learning. She often brought homemade food, as well. She would insist that every individual in her circle was fed and cared for, entertained and appreciated.

When we at CHC think about the legacy she has left us, drawing together the many threads of her work and participation at the history center, I have to include first the joy, humor, grace and generosity she brought to each day, but specifically for our work as promoters of the value of the study of history, Cozetta Guinn left us with an awareness of the importance of the individual human journey, the experience of families and communities through history. Professor Guinn quietly demanded acknowledgement of, respect for, even a reverence for human stories of struggle and defeat, aspiration, and achievement, and for the traces of those stories left as evidence for all of us to consider and preserve for posterity.



Cozetta Gray Guinn and Isaac Guinn were frequent attendees and constant supporters of California History Center events.

When Cozetta Guinn came to work at the California History Center she always brought stories, laughter, generosity, and learning. She often brought homemade food, as well. She would insist that every individual in her circle was fed and cared for, entertained and appreciated.

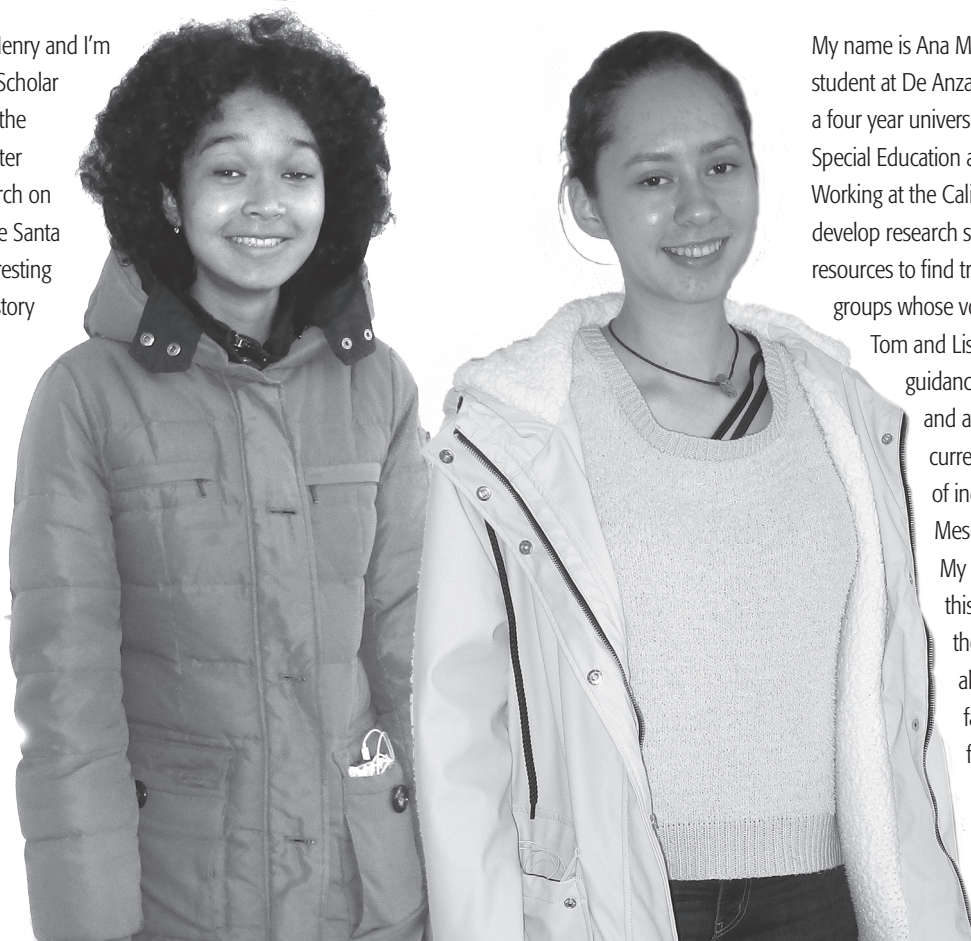


At the Center

On October 27, our annual fundraiser "Taste of History" featured Wesley Ueunten performing story-telling songs of Okinawa and the Okinawan Diaspora. He accompanied himself on the Sanshin a traditional three-stringed instrument, and was joined by musician and history center friend, Francis Wong.



My name is Camille Henry and I'm a Humanities Mellon Scholar at Foothill College. At the California History Center I've been doing research on the black history of the Santa Clara Valley. One interesting aspect of the black history in this area is how the black neighborhoods and Japanese neighborhoods (San Jose Japantown) have been closer together so that is a mystery I'm hoping to solve.



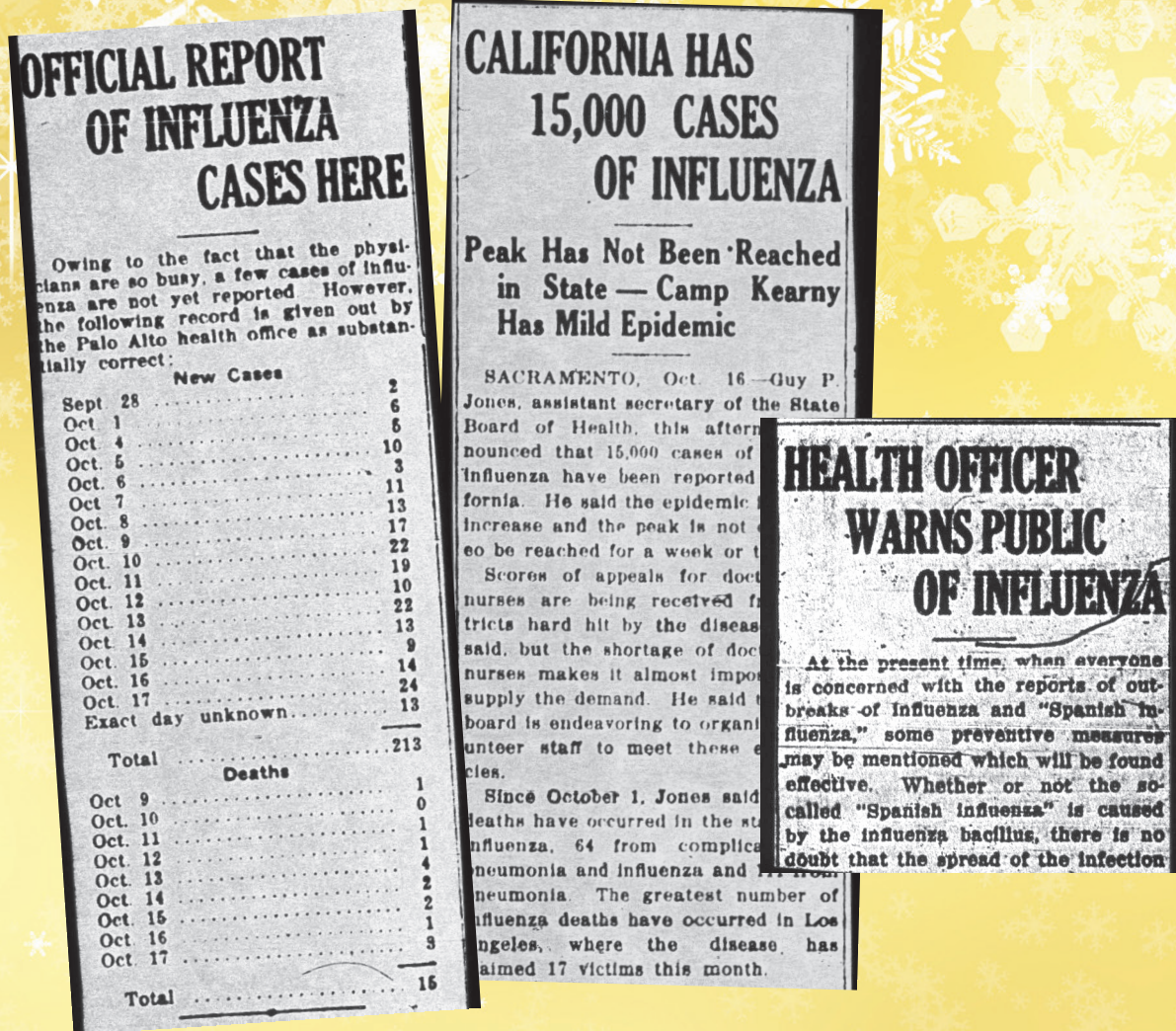
My name is Ana María Vázquez, I am a second year student at De Anza College and am hoping to transfer to a four year university next Fall. I aim to pursue a career in Special Education and indigenous language revitalization. Working at the California History Center is helping me develop research skills I need to effectively corroborate resources to find truth, and reach perspectives from groups whose voices have historically been suppressed.

Tom and Lisa provide me with the tools and guidance I need to successfully analyze sources and approach history from a critical lens. My current project focuses on the community of indigenous Nahua immigrants from Mesoamérica who have settled in San José. My goal with this project is to find out how this indigenous group has maintained their unity, Náhuatl language, and culture alive despite all the discrimination they face on a daily basis. I am excited to form part of the team at the California History Center. Tlazocamatli!

WINTER 2019 CLASS

California History Center State and Regional History Academic Program

The following course will be offered Winter quarter 2019 through the California History Center. Please see the History class listing section of the Schedule of Classes for additional information www.deanza.fhda.edu/schedule or call the center at (408) 864-8986.



Our Dreaded Enemy: The Flu

Course:

Units: 2

Instructor: Nannette Regua

reguanannette@fhda.edu

In 1918, the influenza epidemic spread throughout America and the world. As our doughboys were fighting overseas in World War I, Americans at home were fighting a war of their own, against the influenza virus. Nearly every town was affected by the virus. Santa Clara County had its share of the epidemic. Local city governments declared all citizens must wear gauze masks, schools closed, churches postponed services, and businesses shuttered. Amazingly, doctors, nurses, students, civic leaders, and the community stepped forward and organized efforts to assist infected citizens and curb the spread of the infectious disease.

LECTURES: Wednesdays, 1/23 and 1/30, 6:30 – 10:20 pm, CHC

FIELD STUDIES: Saturday, 1/26 and Friday, 2/1, 9 am – 5:30 pm

ON THE FRONT COVER: Remnants of Eagle-Shawmut mine at Lake Don Pedro in Tuolumne County, November 2015. Charles R. Fuller and friends visited the mine one hundred years earlier. The ruins were exposed because of the multi-year drought affecting California which lowered the lake level. Photograph by Peter Karzmark.

BELOW: Original page from Charles R. Fuller's journal of his trip.

Yosemite Valley guide told me not to try to go into valley by any wagon road - they are blocked with snow and will be so until April or May. It will be necessary for me to go to Bagby in Merced Co. then leave my horse in a stable and go by rail - or hike on track to El Portal, then ten miles over road to Yosemite Valley - There are some forest ranger trails that I could use from here but I would rather travel where there are some signs of civilization.

It is now nine o'clock and I must be on my way.

The weather is fair and warm. Just like summer in middle of day, despite that snow is but 30 miles distant on Valley road.